



June 16, 2010  
Presentation for  
West Haven  
Connecticut's Business Response Center  
CERC

# What is CERC?

---

- ▶ The Connecticut Economic Resource Center, Inc. is a nonprofit corporation that provides our clients with objective research, marketing and economic development services consistent with our mission of making Connecticut a more competitive business environment.
- ▶ CERC was established in 1992 through an economic development marketing partnership established with DED and the state's utility and telecommunication companies.



Comprehensive resources to support business attraction, formation and expansion



Strategic counsel and implementation to exceed communications goals



Expert researchers providing current economic data and in-depth analyses

- ▶ Call center - single point of access to help businesses looking to start, expand or relocate
- ▶ Customer-focused, highly trained business information specialists
- ▶ Thousands of phone/email inquiries annually
- ▶ Referrals sent to state, local & regional agencies and organizations
- ▶ Individually tailored fulfillment packets and continuous tracking



- ▶ Online, up-to-date searchable database
- ▶ Federal, state, regional & local, public/private business assistance programs (technical & financial assistance, job training, incentives, etc.)
- ▶ Searchable by category, keyword or agency
- ▶ Fact sheets with most-requested information
- ▶ Updated semi-annually

CERC ProgramFinder is Connecticut's comprehensive database of business programs and services. ProgramFinder contains information from both the public and private sectors, as well as from federal, state and local levels. To access the state's licensing database, visit [www.ct-clic.com](http://www.ct-clic.com).

## Three Easy Ways to Search for Program Information

Search by Category

Search by Keyword

Search by Agency

Click Arrow for List

Go

If you know which state agency manages the program or type of programs in which you're interested, you can select that agency from the list above, click "Go" and receive a complete listing of programs offered by that agency.

## Quick Links

You can also use our Quick Links section to access our most popular program requests, full records on the agencies (rather than just program information), fact sheets on key business topics and business assistance publications.

### Top 5 Requested Programs

SBA Loan Guaranty Program, (7a)  
Small Business Investment Companies (SBIC) - SBA  
Connecticut Job Bank - DOL  
Connecticut Forecast 2014: Our Workplace Now and in the Future  
URBANK Small Business Loan Program - CDA

Go

### Agency Profiles

Aerospace Components Manufacturers, Inc. (ACM)

Go

### Fact Sheets

Better Business Bureau  
Business Insurance  
Business Plan  
Connecticut Lodging & Restaurant Associations  
Connecticut Chambers of Commerce

Go

CERC ProgramFinder is Connecticut's comprehensive database of business programs and services. ProgramFinder contains information from both the public and private sectors, as well as from federal, state and local levels. To access the state's licensing database, visit [www.ct-clc.com](http://www.ct-clc.com).

### Three Easy Ways to Search for Program Information

Search by Category

Search by Keyword

Search by Agency

Click Arrow for List

Click Arrow for List

- Aerospace Components Manufacturers, Inc. (ACM)
- Angel Investor Forum
- Aquarion Water Company of Connecticut
- Atlantic States Rural Water and Wastewater Association (ASRWVA)
- AT&T
- BEACON - Biomedical Engineering Alliance & Consortium
- Bradley Development League, Inc. (BDL)
- Bridgeport Economic Resource Center (BERC)
- Bridgeport Innovation Center
- Bridgeport Office of Planning and Economic Development
- Bridgeport Regional Business Council (BRBC)
- Capitol Region Education Council (CREC)
- Central Connecticut Regional Planning Agency (CCRPA)
- Central Connecticut Revolving Loan Fund Board
- Charter Oak State College
- Commission on Fire Prevention and Control - Connecticut Fire Acad
- Community Accounting Aid and Services, Inc (CAAS)
- Community Capital Fund (CommCap)
- Community Economic Development Fund (CEDF)
- Connecticut Academy of Science and Engineering (CASE)
- Connecticut Agricultural Businesses Cluster
- Connecticut Association of Nonprofits (CT Nonprofits)
- Connecticut Building Congress (CBC)
- Connecticut Business and Industry Association (CBIA)
- Connecticut Center for Advanced Technology (CCAT)
- Connecticut College
- Connecticut Commission on Culture and Tourism (CCT)
- Connecticut Commission on Human Rights and Opportunities (CHRO)
- Connecticut Community Colleges

Go

which you're interested,  
lete listing of programs

---

am requests, full  
n key business topics

Go

## Agency Results

---

Agency: **U.S. Small Business Administration (SBA)**

Programs Found: **22**

[New Search](#)

---

[8\(a\) Business Development Program - SBA](#)

[Certificate of Competency Program - SBA](#)

[Child Care Facilities Microloan Program - SBA](#)

[Community Express - SBA](#)

[Connecticut Procurement Technical Assistance Program \(PTAP\) - SBA](#)

[Disaster Loan Programs - SBA](#)

[Export Working Capital Program \(EWCP\) - SBA](#)

[HUBZone - Historically Underutilized Business Zones](#)

[Prime Contracting Assistance - SBA](#)

[SBA 504 Loan Program - Summary](#)

[SBA Export Express](#)

[SBA Loan Guaranty Program. \(7a\)](#)

[SBA Microloan](#)

[SBA Patriot Express Loan Initiative - SBA](#)

[SBA Programs - Summary](#)

[SCORE - SBA](#)

[Small Business Innovation Research Program \(SBIR\) - SBA](#)

[Small Business Investment Companies \(SBIC\) - SBA](#)

[Small Business Technology Transfer \(STTR\) - SBA](#)

[Subcontracting Assistance Program - SBA](#)

[SBA 8\(a\) Business Development Program - SBA](#)

## SBA 504 Loan Program - Summary

• [E-MAIL THIS](#) • [PRINT THIS](#)

**Agency:** U.S. Small Business Administration (SBA)

**Program Description:**

The SBA 504 Loan Program provides growing businesses with long-term, fixed-rate financing for major fixed assets such as land, buildings and long-term machinery and equipment. The loan program is delivered by Certified Development Companies (CDC), generally non-profit corporations set up to contribute to the economic development of a community. CDCs work with the SBA and private sector lenders to provide this fixed-asset financing to small businesses.

The maximum SBA debenture is \$1.5 million for meeting the job creation criteria or a community development goal. Generally, a business must create or retain one job for every \$50,000 provided by the SBA. The maximum SBA debenture is \$2.0 million for meeting a public policy goal.

Proceeds from 504 loans must be used for fixed asset projects such as: purchasing land and improvements, including existing buildings, grading, street improvements, utilities, parking lots and landscaping; construction of new facilities, or modernizing, renovating or converting existing facilities; or purchasing long-term machinery and equipment.

**Program Region:** Statewide

**Program Contact(s):**

Greta Johansson

330 Main Street

Hartford, CT 06106

Phone: (860) 240-4672

[www.sba.gov/services/financialassistance/sbaloantopics/cdc504/index.html](http://www.sba.gov/services/financialassistance/sbaloantopics/cdc504/index.html)

Connecticut Business Development Corporation

999 West Street

Rocky Hill, CT 06067

Phone: (203) 458-2765

Fax: (860) 257-7582

[www.ctcda.com/cmslite/default.asp?cmslite\\_page=58&info=](http://www.ctcda.com/cmslite/default.asp?cmslite_page=58&info=)

---

**For More Programs on Federal Agencies, Financial Resources:**

Connecticut Development Authority Financing Programs - General In  
Loans and Technical Assistance - CEDF  
SBA Loan Guaranty Program, (7a)  
SBA Microloan Program - CTCIC  
SBA Microloan

go

**Other Programs Available From This Agency:**

8(a) Business Development Program - SBA  
Certificate of Competency Program - SBA  
Child Care Facilities Microloan Program - SBA  
Community Express - SBA  
Connecticut Procurement Technical Assistance Program (PTAP) - SBA

go

---

## Agency Profile

**Agency:** U.S. Small Business Administration (SBA)

**Mission:** Maintain and strengthen the nation's economy by aiding, counseling, assisting and protecting the interests of small businesses and by helping families and businesses recover from national disasters.

**Contact Information:**

409 Third Street, Southwest  
Suite 8800  
Washington, DC 20416  
Phone: (800) 827-5722  
[www.sba.gov/aboutsba/index.html](http://www.sba.gov/aboutsba/index.html)

**District Office:**

Greta Johansson or Stephanie Scott  
330 Main Street  
Hartford, CT 06106  
Phone: (860) 240-4672 Greta  
Phone: (860) 240-4637 Stephanie  
Fax: (860) 240-4659  
[www.sba.gov/localresources/district/ct/index.html](http://www.sba.gov/localresources/district/ct/index.html)

**Regional Office:**

10 Causeway Street, Room 265  
Boston, MA 02222-1093  
Phone: (617) 565-5590  
Fax: (617) 565-5598  
[www.sba.gov](http://www.sba.gov)

CERC ProgramFinder is Connecticut's comprehensive database of business programs and services. ProgramFinder contains information from both the public and private sectors, as well as from federal, state and local levels. To access the state's licensing database, visit [www.ct-clic.com](http://www.ct-clic.com).

### Three Easy Ways to Search for Program Information

Search by Category
Search by Keyword
Search by Agency

Click Arrow for List Go

- Click Arrow for List
- Biotechnology
- Business Organization Benefits
- Colleges/Universities
- Counseling Service/Workshops
- Economic Development Organizations
- Environmental
- Export Assistance
- Federal Agencies
- Film and Media
- Financial Resources
- Housing
- Incubators
- Information Technology
- Manufacturing
- Minority Resources
- Permits/Licenses/Regulations
- Procurement
- Real Estate
- Research/Demographics/Economic Data
- State Agency Resources
- Tax Credits and Incentives
- Technical Resources
- Telecommunications
- The Arts
- Tourism
- Training/Education
- Utilities
- Women Resources
- Workforce Services
- Connecticut Chambers of Commerce

of programs closely related to your interest area. Select click "Go."

---

#### Quick Links

to access our most popular program requests, full program information), fact sheets on key business topics

Now and in the Future

Go

Go

Go

## Quick Links

You can also use our Quick Links section to access our most popular program requests, full records on the agencies (rather than just program information), fact sheets on key business topics and business assistance publications.

### Top 5 Requested Programs

Small Business Investment Companies (SBIC) - SBA  
SBA Loan Guaranty Program, (7a)  
Connecticut Job Bank - DOL  
Connecticut Forecast 2014: Our Workplace Now and in the Future  
URBANK Small Business Loan Program - CDA



### Agency Profiles

Aerospace Components Manufacturers, Inc. (ACM)



### Fact Sheets

Registering Your Out-Of-State Business In Connecticut  
Resources for Information on Conferences & Trade Show Facilities  
**Technology Innovators and Inventor Resources**  
USDA Rural Development  
Venture Capital Resources



### Helpful Publications

Connecticut's Business Response Center  
State of Connecticut, Licensing Info Center  
SBA Resource Guide - Connecticut Edition  
Demystifying The Business Organization  
In The Business of Growing Your Business - DECD



---

If you have questions, can't find what you need or know of a program we're missing, please call the Connecticut Business Response Center at 1-800-392-2122, or email us at [programs@cerc.com](mailto:programs@cerc.com).

## Technology Innovators and Inventor Resources

- [E-MAIL THIS](#)
- [PRINT THIS](#)

### Patent Information:

#### U.S. Patent & Trademark Office

Patent and Trademark Office  
P.O. Box 1450  
Alexandria, VA 22313-1450  
Toll Free: 800-786-9199  
Web site: [www.uspto.gov](http://www.uspto.gov)

Contact for "General Information Concerning Patents" publication.

#### U.S. Depository Library

Depository for government publications (state and federal) dating from the 1870's.  
Bridgeport Public Library  
Phone: 203-576-7406  
(Patent searches can be done on-line)

#### Micro Patent

250 Dodge Avenue  
East Haven, CT 06512  
Phone: 800-336-4474  
Phone: 203-466-5055  
Web site: [www.micropat.com](http://www.micropat.com)

Provides CD ROM data on patents. International patents searches available by fax and courier.  
Trademark searches as well. MicroPatent is a global leader in the production and distribution of patent  
and trademark information.

For additional [patent information](#).

### Patent Attorneys:

University of Connecticut School of Law - Intellectual Property and Entrepreneurship Clinic  
(IPEC)

- ▶ Full-service business registration assistance for new and expanding businesses
- ▶ Free assistance in person in Rocky Hill, online, mail or via fax
- ▶ Customer friendly; streamlined; efficient
- ▶ Help to determine registration needs, fees, how to register; assistance completing forms
- ▶ Partnership with the state

- ▶ Self-service online business registration assistance
- ▶ Recent upgrades to web-based system and enhanced marketing effort
- ▶ Users find answers and quick contacts
- ▶ Determine registration needs, fees, how to register; download forms and instructions; verify license status and more

Search

Go



## Start, Move, Expand a Business >

Get instant access to the business licensing information you need to succeed.

[> Start the Checklist](#)



## Trade/Occupational Licenses >

Many trades and occupations in Connecticut require licensing and/or educational attainment.

[> Browse this List of Licenses](#)



## Browse by Agency >

View a complete list of agency licensing.

[> View Licenses by Agency](#)

## Welcome to the State of Connecticut's Online Licensing Info Center

The growth of our business community is important for Connecticut's economy, and we know that businesses need a wide range of information to succeed. CT-CLIC.com is specifically



designed to give you quick and easy access to the licensing information needed to start, expand or relocate a business in Connecticut. The site also caters to individuals who live, recreate or require occupational licensing. If you don't find what you're looking for, please [contact us](#).

- Governor M. Jodi Rell

### News:

**4/3/2009** | Berlin Chamber of Commerce Hosting "Starting or Expanding A Business" Session:

[> Read More](#)

**3/12/2009** | 2009 Connecticut Tax Amnesty Program Available:

[> Read More](#)

### Testimonials:

Owners Weimei Yao and Hou Ming contacted

## Need Business Assistance? We Can Help!

Click Here to Get FREE, confidential, assistance from:

**Smart Start**  
The First Step For Business

## License Verification

Verify a license, permit and/or registration held by individuals and businesses regulated by the state. [> Learn More](#)

### External Links:

- [> State Agencies](#)
- [> Towns and Cities](#)
- [> Connecticut's Business Response Center](#)
- [> You Belong In CT](#)
- [> CERC ProgramFinder@](#)
- [> CERC SiteFinder@](#)
- [> CERC DataFinder@](#)
- [> Town Profiles](#)
- [> Small Business](#)

- ▶ Connecticut's most comprehensive database of 3,000+ commercial properties
- ▶ Listings posted by commercial real estate firms, private owners and municipalities
- ▶ Facilitates economic development by eliminating barriers to listing or searching for property
- ▶ Latest upgrade to GIS Planning-based system combines real estate and demographics reports (EDDI)

[Find Properties](#)[Find Communities](#)[Community Reports](#)[Resource Library](#)[Add a Property](#)[Post Your Active Need](#)[Member Directory](#)[Member Login](#)

### Member LOGIN ▶

Not a Member? [Click Here.](#)User: Pass: [▶ LOGIN](#)

Begin Your

**FREE Search ▶***No Membership Required*

### Our MEMBERS > [Directory](#)



### Active NEEDS

Having trouble finding your property?

[Post Your Need ▶](#)

Members currently see 132 Active Needs

### FEATURED PROPERTIES



#### Enfield Business Park

▶ 300 Shaker Road  
Enfield, CT▶ 860-249-0900  
[www.cushwake.com](http://www.cushwake.com)[▶ VIEW PROPERTY DETAILS](#)[Download a map of CT towns ▶](#)

### Connecticut's Commercial Real Estate Source

CERC SiteFinder® is CT's most comprehensive online database of available commercial properties. From here, brokers, economic developers and end users can post and search for retail, office, industrial, investment, and specialty real estate. For more than a decade, SiteFinder has been a key tool among hundreds of daily users in the transaction process, resulting in successful deals helping to grow businesses and jobs in Connecticut. [Start Your Free Search...](#)

### NEWS and EVENTS

- ▶ [Tour Retail and Office Space at Water's Edge Resort & Spa](#)  
3/5/09
- ▶ [Fourth Quarter 2008](#)  
1/6/09
- ▶ [Lorem ipsum dolor sit amet adipiscing elit sed diam h](#)  
12/8/08
- ▶ [Third Quarter 2008](#)  
10/6/08
- ▶ [More News](#) | [More Events](#)
- ▶ [Subscribe to the SiteFinder eNewsletter](#)



Find Properties



Find Communities



Community Reports



Resource Library



Add a Property



Post Your Active Need



Member Directory



Member Login

Sponsor Ad:



Search

Legend

Tools

Layers

Data

View

My Folder

Results Based On

Viewing 1-5 of 47

Pages 1 | 2 | 3 | 4 of 10

Print Compare Sort by Export Advanced

Save to Folder  
Zoom to property  
View Reports



Property

11 Stony Hill Road

BETHEL, CONNECTICUT  
Building:



2 Stony Hill Rd Suite 206

BETHEL, CONNECTICUT  
Building:



36 Trumbull Street

NEW HAVEN, CONNECTICUT  
Building:



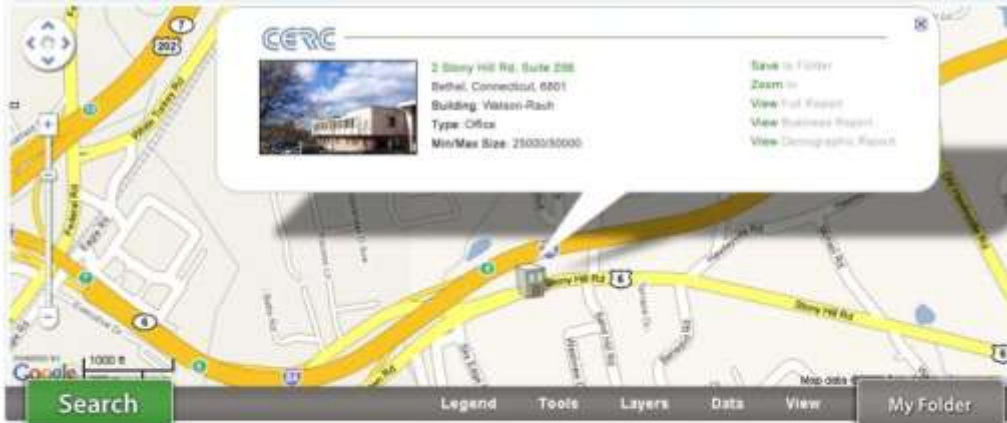
241 Trumbull Street

HARTFORD, CONNECTICUT  
Building:



23 Clara Drive

STONINGTON, CONNECTICUT  
Building:



2 Stony Hill Rd Suite 206 - BETHEL, CONNECTICUT 0601

Share Save Print Export View Community Advanced

[Back to search results](#)

Full Property **Labor Force** Demographics Consumer Spending Business

Property Report (11 Stony Hill Road)



Property Summary

Street Address	11 Stony Hill Road
City	Bethel
County	Fairfield
Type of Space	Office
Zipcode	0601
Minimum Available	1,500 sqft
Maximum Available	20,000 sqft

Contact Information

Company	CERC
Contact Name	Thomas Watson
Address	141 Union Ave
City	Windsor Locks
State	CT
Phone	555-555-5555
Email	<a href="mailto:info@cerc.com">info@cerc.com</a>



Building Details

Air Conditioning	Yes
Air Condition Main	Yes
Air Conditioning Office	Yes
Maximum Ceiling	12
Minimum Ceiling	10
Number Floors	2
Office Class	A
Parking	Outside / Paved
Number Parking	100
Sprinkler Type	Underground
Year Built	1978

Property Details

Minimum Divisible Size	2000sqft
Divisible	Yes
For Lease	Yes
For Sale	Yes
Lease Rate	1200/2000 month
Lease Terms	5year

Location

Nearest Airport	Hartford
Distance to Nearest Airport	20 miles
Distance to Commuter Rail	18 miles
Distance to Interstate	5 mile
Interstate Name	I94
Rail	Existing
Rail Provider	PS&W
Rail Type	Freight



Share Save Print Export View Community Advanced

[Back to search results](#)

Full Property

Labor Force

Demographics

Consumer Spending

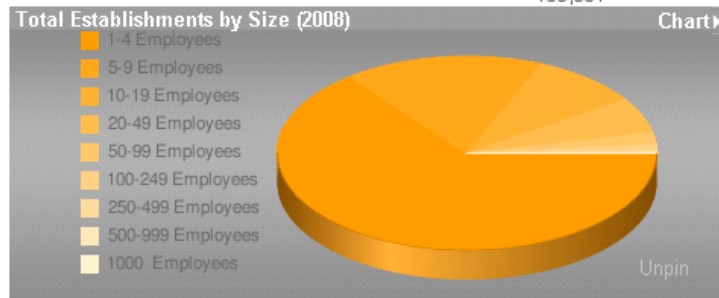
Business

Labor Force Report (10 mile radius around 2 Stony Hill Rd Suite 206)

[Modify Report](#)

<b>Total Establishments</b>	10,573
-----------------------------	--------

<b>Total Employees</b>	108,081
------------------------	---------



	TOTAL	%
1-4 Employees	6,815	64.46
5-9 Employees	1,795	16.98
10-19 Employees	978	9.25
20-49 Employees	622	5.88
50-99 Employees	204	1.93
100-249 Employees	116	1.1
250-499 Employees	33	.31
500-999 Employees	6	.06
1000+ Employees	4	.04

<b>Total Businesses by Establishment Type (2008)</b>	TOTAL	%
Agriculture, Forestry and Fishing	15	.14
Agricultural Services	342	3.23
Coal and Ore Mining	5	.05
Oil and Gas	2	.02
General Construction	346	3.27
Heavy Construction	853	8.07
Food Manufacturing	7	.07
Tobacco Manufacturing		
Textile Mills	2	.02
Apparel and Textile Manufacturing	3	.03
Lumber and Wood Production	21	.2

<b>Total Employees by Major SIC (2008)</b>	TOTAL	%
Agricultural, Forestry, Fishing (SIC Range 01-09)	1,715	1.59
Mining (SIC 10-14)	46	.04
Construction (SIC 15-17)	5,281	4.89
Manufacturing (SIC 20-39)	16,452	15.22
Transportation and Communications (SIC 40-49)	4,398	4.07
Wholesale Trade (SIC 50-51)	4,495	4.16
Retail Trade (SIC 52-59)	21,217	19.63
Finance, Insurance And Real Estate (SIC 60-69)	6,521	6.03
Services (SIC 70-89)	42,414	39.24
Public Administration (SIC 90-98)	3,653	3.38
Unclassified (SIC 99)	1,889	1.75

<b>Total Employees by Establishment Type (2008)</b>	TOTAL	%
Agriculture, Forestry and Fishing	368	.34
Agricultural Services	1,347	1.25
Coal and Ore Mining	29	.03
Oil and Gas	17	.02
General Construction	1,355	1.25
Heavy Construction	3,926	3.63
Food Manufacturing	77	.07
Tobacco Manufacturing		
Textile Mills	18	.02
Apparel and Textile Manufacturing	5	.005
Lumber and Wood Production	167	.15
Furniture Manufacturing	18	.02
Paper Manufacturing	1,765	1.63
Printing and Publishing	3,205	2.97
Chemicals	3,847	3.56
Petroleum Refining		
Rubber and Plastics	312	.29
Leather Manufacturing	3	.003
Stone, Glass, and Concrete	123	.11
Metals Fabrication	1,075	.99
Machinery and Equipment Manufacturing	5,837	5.4



Share **Save** Print Export View Community Advanced

[Back to search results](#)

Full Property Report Building Labor Force Demographics **Consumer Spending** Business

Demographics Report (10 mile radius around 2 S Stony Hill Rd Suite 206)

[Modify Report](#)

Population (2013)  
2008 Population  
Sex 100%

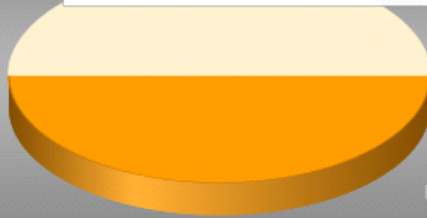
Please enter the following report criteria:

Radius (miles):

[Generate Report](#)

Reset Form Cancel

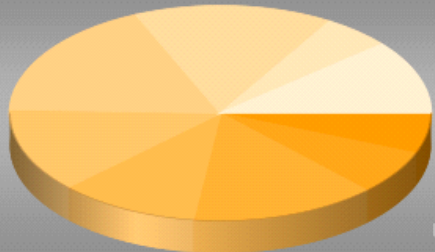
Male  
Female



	TOTAL	%
Male	105,633	49.97
Female	105,767	50.03

Age Distribution (2008)

0-4  
5-9  
10-19  
20-29  
30-39  
40-49  
50-59  
60-64  
65+



	TOTAL	%
0-4	12,802	6.06
5-9	14,112	6.68
10-19	30,319	14.34
20-29	22,847	10.81
30-39	26,766	12.66
40-49	37,845	17.9
50-59	32,265	15.26
60-64	10,968	5.19
65+	23,476	11.11

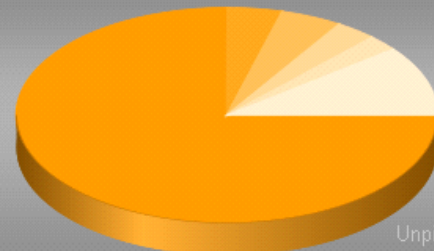
	TOTAL	%
Male	108,889	50.3
Female	107,589	49.7

Age Distribution (2013)

	TOTAL	%
0-4	12,307	5.69
5-9	13,076	6.04
10-19	29,955	13.84
20-29	27,044	12.49
30-39	22,995	10.62
40-49	33,969	15.69
50-59	35,991	16.63
60-64	13,602	6.28
65+	27,539	12.72

Race Distribution (2013)

White  
Black  
American Indian  
Asian  
Pacific Islander  
Other  
Multirace  
Hispanic



	TOTAL	%
White	181,504	83.84
Black	10,145	4.69
American Indian	131	.06
Asian	11,241	5.19
Pacific Islander	201	.09
Other	7,465	3.45
Multirace	5,791	2.68
Hispanic	25,475	11.77



**301 Plus Park Blvd** - NASHVILLE-DAVIDSON (BALANCE), TN 37217

Share Save Print Export Attachments View Community

[Return to Search Results](#)

Full Property

Labor Force

Demographics

Consumer Spending

**Business**

**Business Report** (1 mile radius around 208 Industrial - Carthage-Robert Shaw Controls Bldg)

[Modify Report](#)

Business Type	Total	%	Total Revenue	# Employees
Retail Trade	26	20.0%	54,689,996	40
Administrative, Support, Waste Management, And Remediation Services	9	6.9%	2,334,555	130
Unclassified	1	0.8%	1,598,999	20
Educational Services	2	1.5%	1,990,876	30
Health Care And Social Assistance	7	5.4%	2,098,985	70
Wholesale Trade	6	4.6%	1,879,076	30
Other Services	30	23.1%	1,700,896	40
Finance And Insurance	3	2.3%	1,593,887	20
Information	1	0.8%	3,890,876	180
Public Administration	1	0.8%	2,698,000	20
Real Estate	7	5.4%	4,987,765	40
Construction	19	14.6%	5,794,987	30
Manufacturing	2	1.5%	4,895,000	30
Arts, Entertainment, And Recreation	3	2.3%	4,879,900	120
Professional, Scientific, And Technical Services	2	1.5%	2,598,789	20
Accommodation And Food Services	9	6.9%	10,900,876	30
Transportation And Warehousing	2	1.5%	4,598,987	70



*the leading provider of economic development resources*

2008 Research & Policy Initiative

Public Policy Work

- Benchmarking Connecticut
- Communities, Connecting to Compete
- Dashboards
- Housing Reports
- Papers and Presentations
- Town Profiles**

Custom Client Projects

DataFinder

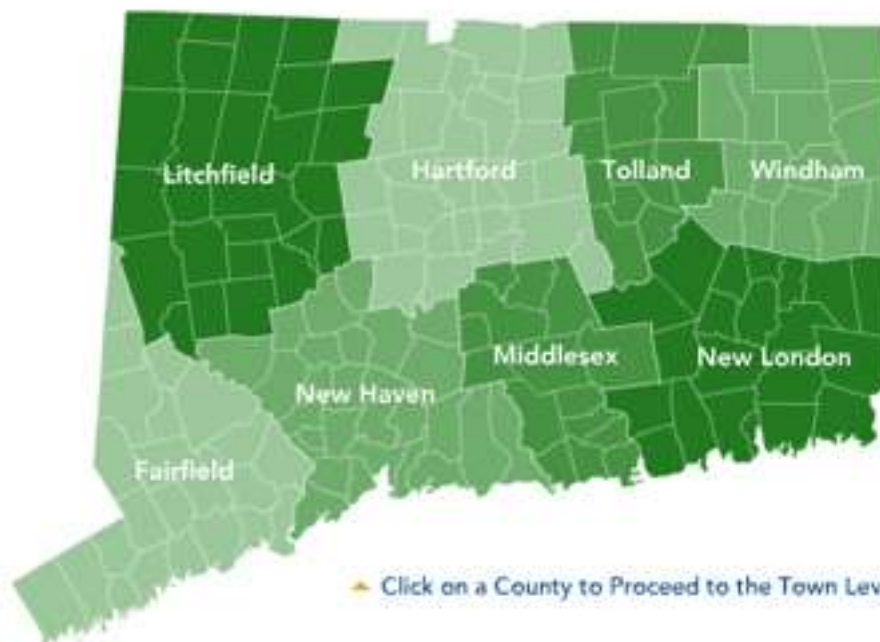
GIS Mapping

### Contact CERC

How can we help your business be competitive through our research services?

[▶ start here](#)

## Town Profiles



### State of Connecticut

- Population: 3,549,606
- Households: 1,332,283
- Land Area (sq. miles): 5,009

[DOWNLOAD FULL Profile](#)

▶ [Click Here for a List of All Towns by County](#)

# Rocky Hill, Connecticut

## CERC Town Profile 2009

Town Hall  
P.O. Box 657  
Rocky Hill, CT 06067  
(860) 258-2705

Belongs to  
Hartford County  
Hartford Labor Market Area  
Capitol Area Economic Dev. Region  
Capitol Region Planning Area



Incorporated in 1843

### Demographics

Population (2008)	Town	County	State
1990	16,554	851,783	3,287,116
2000	17,966	857,183	3,405,565
2008	19,555	881,915	3,540,846
2013	20,671	896,561	3,621,281
'08-'13 Growth / Yr	1.1%	0.3%	0.5%
Land Area (sq. miles)	13	735	5,009
Pop./ Sq. Mile (2008)	1,453	1,199	707
Median Age (2008)	43	40	40
Households (2008)	7,985	338,086	1,333,050
Med HH Inc. (2008)	\$75,712	\$63,239	\$67,236

Race/Ethnicity (2008)	Town	County	State
White	17,067	663,268	2,807,439
Black	832	109,188	340,407
Asian Pacific	1,103	31,976	128,690
Native American	20	1,617	6,679
Other/Multi-Race	533	75,866	257,631
Hispanic (any race)	812	118,668	415,806
Poverty Rate (1999)	2.9%	9.3%	7.9%
Educational Attainment (2008)			
Persons Age 25 or Older		%	State %
High School Graduate	4,022	28%	723,175 30%
Some College	3,835	27%	592,297 25%
Bachelors or More	5,339	37%	824,309 34%

### Age Distribution (2008)

	0-4	5-17	18-24	25-49	50-64	65+	Total
Male	524 3%	1,402 7%	727 4%	3,509 18%	2,130 11%	1,374 7%	9,666
Female	471 3%	1,364 7%	696 4%	3,667 19%	2,017 10%	1,674 9%	9,889
County Total	53,268 6%	146,496 17%	82,005 9%	299,754 34%	173,539 20%	126,853 14%	881,915
State Total	209,662 6%	507,403 17%	332,316 9%	1,219,043 34%	692,305 20%	490,117 14%	3,540,846

### Economics

Business Profile (2005)	% of Total	
Sector	Establishments	Employment
Agriculture	2.5%	1.3%
Const. and Mining	11.0%	4.2%
Manufacturing	4.8%	20.5%
Trans. and Utilities	3.4%	5.6%
Trade	19.3%	22.7%
Finance, Ins. and Real Estate	11.8%	10.9%
Services	43.4%	28.9%
Government	3.8%	5.9%

Top Five Grand List (2006)	Amount	% of Net
500 Enterprise NT	\$24,113,340	1.7%
Henkel Corp	\$18,504,360	1.3%
Century Hills Assoc LP	\$14,751,970	1.1%
Syco Food Svcs Of CT LLC	\$13,253,210	0.9%
Glenbrook Apartments LLC	\$12,686,340	0.9%
Net Grand List (2006)	\$1,403,396,120	
Top Five Major Employers (2006)		
Loctite Corporation North America	Cingular Wireless	
Syco Food Services	Hartford Ball & Bearing Co.	
State Dept. of Veterans Affairs		
Retail Sales (2006)	Town	State
All Outlets	\$1,694,847,362	\$131,862,299,674

### Education

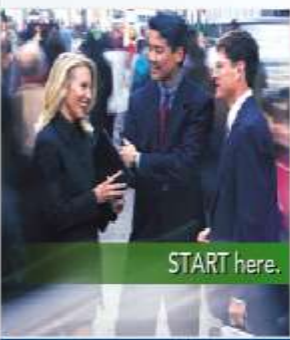
2005-2006 School Year	Town	State
Total Town School Enrollment	2,488	566,606
Most public school students in Rocky Hill attend Rocky Hill School District, which has 2,486 students.		

Connecticut Mastery Test Percent Above Goal					
Grade 4		Grade 6		Grade 8	
Town	State	Town	State	Town	State
Reading	64 53	76 60	81 65		
Math	73 57	75 61	71 56		
Writing	76 63	80 61	80 61		

For more education data please see: <a href="http://www.state.ct.us/sde/">http://www.state.ct.us/sde/</a>	Students per Computer		Average Class Size		Average SAT Score	
	Town	State	Grade K	Grade 2	Town	State
	Elementary:	5.0 4.0	Grade K 17.0	Grade 2 18.0	Verbal	516 508
	Middle:	4.0 3.0	Grade 5 22.0	Grade 7 20.0	Math	526 508
Secondary:	2.9 3.2	High School 17.6				



the leading provider of economic development resources



research services

marketing services

economic development services

Looking for an economic development partner with comprehensive resources?

WELCOME

Start with the Connecticut Economic Resource Center, Inc. (CERC), a nonprofit corporation that provides our clients with objective research, marketing and economic development services consistent with our mission of making Connecticut a more competitive business environment.

Recent NEWS

- ▶ [CERC Data Day, May 4](#)  
4/9/2010
- ▶ [Latest Data Shows Ups and Downs of Economic Recovery for CT](#)  
4/1/2010
- ▶ [One of Connecticut's Leading Economists Announces Retirement](#)  
3/22/2010

RESOURCES

- ▶ [SiteFinder](#)
- ▶ [ProgramFinder](#)
- ▶ [DataFinder](#)
- ▶ [Town Profiles](#)
- ▶ [CT's Business Response Center](#)

CERC Blog

CERC's latest blog entry - by Dale Shannon  
Economics is known as the "Dismal Science" and undoubtedly deserves the reputation...

▶ [Read More](#) | [Subscribe](#)

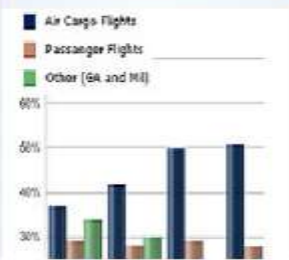
**eNews SOLUTIONS** ▶  
Sign up for the CERC eNewsletter.

Name:

Email:

**SUBMIT**

CERC Dashboards



# Contact

For more information:

## CERC

860-571-7136

[www.cerc.com](http://www.cerc.com)

## Connecticut's Business Response Center

1-800-392-2122

[www.YouBelongInCT.com](http://www.YouBelongInCT.com)

